

Multiple use of \$20 including a dark and light shade.

Top April 1986 underpaying \$110 rate to Europe (Tariff 39)

Bottom May 1986 - 7 x \$20 and 2 x \$5 (one on reverse) this only paid registration no postage.

SERIES 8

1985 - 1988

Paper Identification

Origin	England
Weight g/m²	97
Watermark	No
Satin Finish	Yes
Type of Luminescence	Bright luminescence on front
Gum characteristics	Ivory
Type of gum	PVA

This series was on issue from 1985 – 1988. High inflation occurred with the peso moving from 192 to the US\$ in 1984 to 2273 in 1988. This is reflected in the values of the stamps issued.



1985,86 – 30,950,000 (c)



Perf 11.5 – 1986 – 55,214,250 (h)



Perf 11.5 – 1986 – 10,219,750 (h)



1986, 87 – 10,184,100 (c) 21,475,000 (h)



1987, 88 – 5,115,000 (c)



1986 – 24,175,000 (c)



1985, 86 – 28,715,550 (h)



Perf 11.5 – 1986, 87 – 35,180,000 (h)



1987 – 15,425,000 (c)

DLG states that an \$8 and \$9 overall exist in series 8. This is not recorded by TIEV, but given the overlapping period of production this would not have been impossible.

SERIES 8



1987, 88 – 3,375,000 (c), 12,035,000 (h)



1986 – 55,005,000 (c)



1986, 87 – 64,340,000 (c)



1987, 88 – 50,345,950 (h)



Perf 11.5 – 1986, 88 – 40,385,000 (c)



1986 – 35,045,000 (h)



Perf 11.5 – 1987 – 5,030,000 (h)



1985 – 20,360,000 (c)



1986 – 30,180,000 (h)



1986 – 26,664,500 (h) 5,840,000 (c)



1985 – 69,959,000 (c)

SERIES 8



1987, 89 14,395,000 (c) 10,000,000 (h)



Perf 11.5 - 1988 - 22,235,000 (h)



1986 - 22,690,000 (c)



1986 - 33,715,000 (c)



1987, 88 - 44,685,000 (c)



1986, 87 - 47,670,000 (c)



1988 - 5,055,000 (c)



1988 - 5,045,000 (c)



1988 - 10,080,000 (h)



1988 - 5,210,000 (h)



In this series the printer hand engraved the plate numbers on the margin of the 5 peso minerals. There appears to have been no reason for this action.



Paper Varieties

A second paper variety that is a slight cream colour has been recognised by one author (DLG). No specific information on this exists from TIEV.



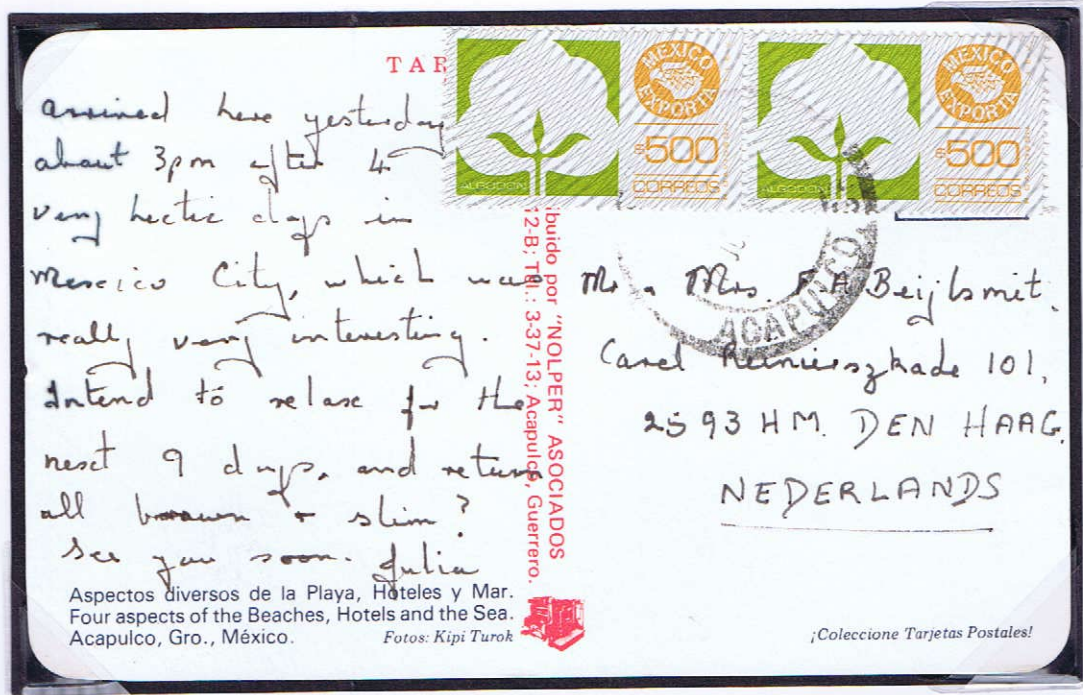
Normal White



Off White



Local postage within Mexico Tariff 43 (1 Jan 88 -31 Dec 88)



Pair of \$500 correct postage for Tariff 43 (1 Jan 88 -31 Dec 88) rate to Europe

SERIES 6

1982 - 1984

Paper Identification

Surface

Origin	England
Weight g/m ²	85
Watermark	No
Satin Finish	Yes
Type of Luminescence	Fluorescence on both sides
Gum characteristics	Brilliant white
Type of gum	PVA

This series contains some of the scarcest issues of the Exporta issue. DLG states that this issue was only sold in a limited number of cities and towns within Mexico.



1983 - 2,555,000 (h)



1982 - 4,522,500 (h)



1983, 84 - 13,768,600 (c)



1982 - 1,255,000 (c)



1983, 84 - 452,300 (h)



1982 - 1,424,100 (h)



Perf 11.5 - 1983 - 10,846,450 (h)



1983 - 3,075,000 (c)



1983 - 4,717,150 (h)

SERIES 6

Surface and Airmail



1983 - 2,355,500 (h)



Perf 11.5 - 1983 - 16,406,300 (h)



1983 - 13,942,650 (c)



1983 - n/a (h)
37.5mm Plate

This is the scarcest normally issued stamp in the Exporta issue. The numbers printed were not stated by TIEV but are very low and are probably included in the 8300 panes quoted for the series 5 paper. (MEPSI)



1983, 84 - 10,000,000 (c)
36.5mm Plate



1984 - 5,125,750 (c)



1983 - 2,300,750 (c)
with burelage



1983 - 1,833,800 (c)
with burelage

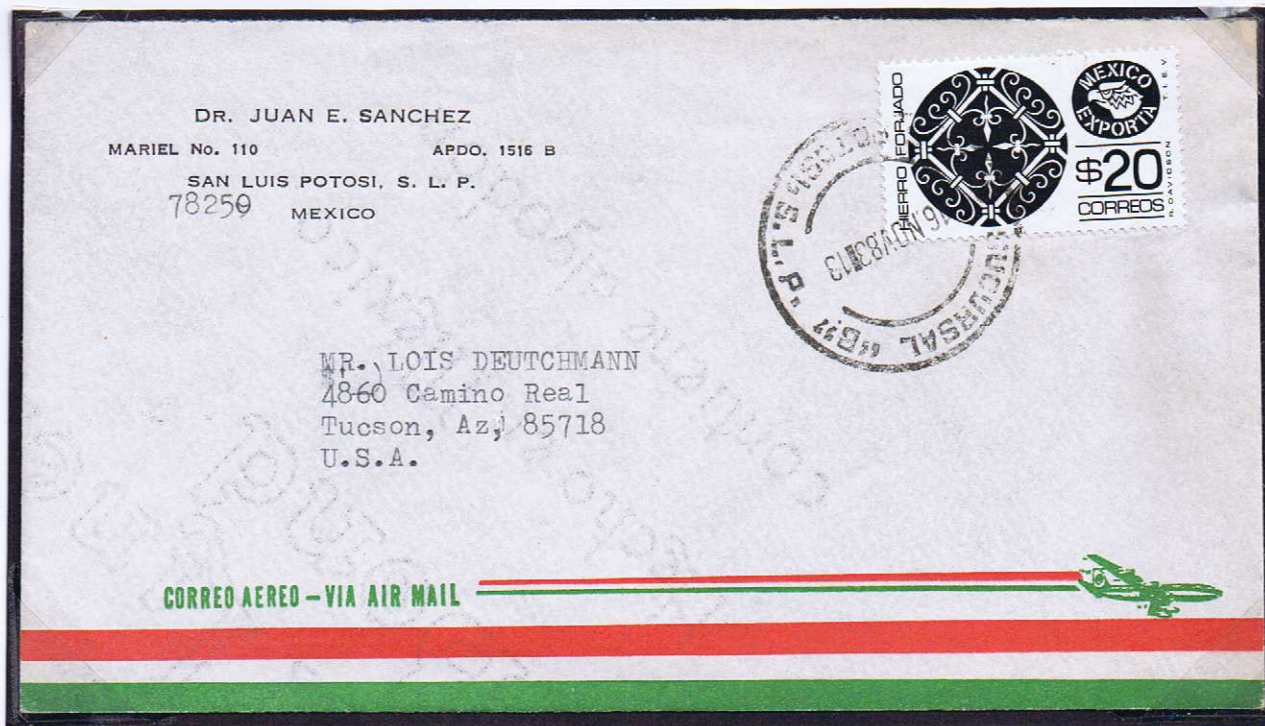


1983, 84 - 5,000,000 (c)
with burelage



Airmail - 1983 - 3,000,000 (c)

This was the last airmail stamp as from 1983 all mail was carried by air.



\$20 forged iron (36.5mm) airmail rate to N America (Tariff 34 – 1 Jul 1983 – 31 Dec 1983)



3 x \$50 books for airmail to Europe \$90 and registration of \$60 (Tariff 36- 1 Aug 84 – 31 Jan 85)

SERIES 7

1983 - 1986

Paper Identification

Origin	England
Weight g/m²	97
Watermark	No
Satin Finish	No
Type of Luminescence	Fluorescence on both sides
Gum characteristics	Ivory
Type of gum	PVA

When placed on a dark surface the design of the stamp can be seen through the paper under UV. This is the main feature distinguishing this series from series 8.



1984, 85 – 58,111,4000 (c)



1984, 85 – 559,335,000 (c)



Perf 11.5 – 1983, 84 – 34,935,700 – (h)



1983 – 15,660,800 (c)



1983, 84, 85 – 30,000,000 (c)



Perf 11.5 – 1984 85, 86 – 99,431,250 (h)



Perf 11 – 1984, 85 - 26,735,850 (h)



Perf 11.5 – 1984, 85 – 18,804,150 (h)



Perf 11.5 – 1985 – 18,612,250 (h)



1984 – 50,000,000 (h)



Perf 11 – 1984 – 6,490,650 (h)



Perf 11.5 – 1984, 85 – 33,509,850 (h)

SERIES 7



1984 - 40,106,250 (h)



1983, 84 - 20,220,000 (c) 1,115,000 (h)



1984 - 20,000,000 (c)



1984, 85 - 120,325,000 (h)



1984 - 10,000,000 (h)



1984 - 20,000,000 (c)



1984 - 10,000,000 (c)



1984, 85, 86 - 46,370,000 (h)



1984 - 5,000,000



1984 - 5,000,000
Inverted burelage



1984 - 2,290,000
Inverted burelage

The inverted burelage is easily recognised by the lines at the top right that appear almost horizontal rather than vertical.

SERIES 7



1984, 85 – 10,049,000 (c)



1984 – 10,000,000 (c)

Varieties

The 500 peso stamp without burelage is considered a genuine error recognised by MEPSI, and Celis Cano.

A variety that exists only on the \$7 overall is a striped effect

Normal

Striped



Colour Varieties

There are a wide variety of colours in the series. A number the overall stamps are displayed as examples.



Grey blue



Bright blue



Dark Prussian blue



Dull Blue



Prussian blue



Light Prussian blue

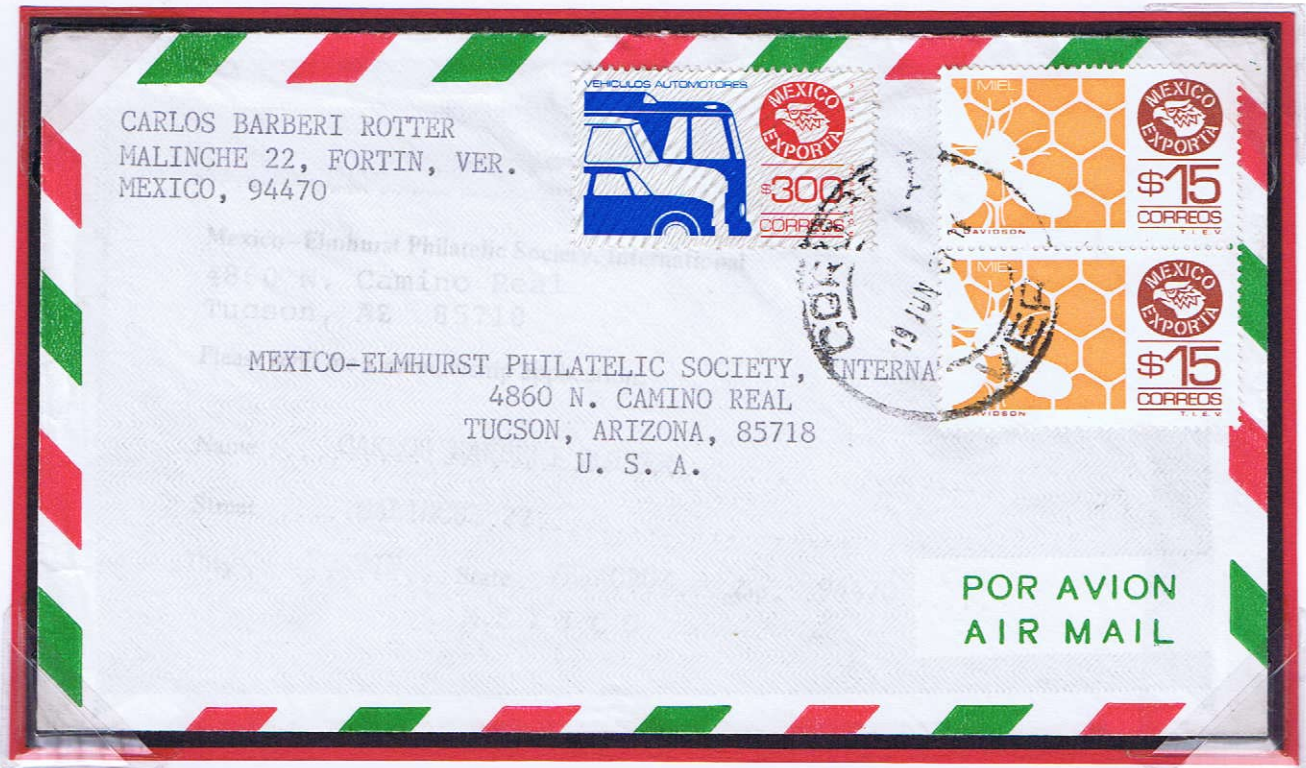
The translucent properties and satin finish of series 7 stamps separate them from series 8. The differences cannot always be readily determined on cover. Some stamps exist in series 7 but not 8. and usage of some of these will be shown with others that are considered to be from this series.



Combination of \$5 (Perf 11.5) and \$6 (Perf 11.5- small holes) 22 Nov 1985 totaling \$31. Should have been \$40 air rate within Mexico (Tariff 38 from 1 Nov 1985). Low values would only have been used in combinations.



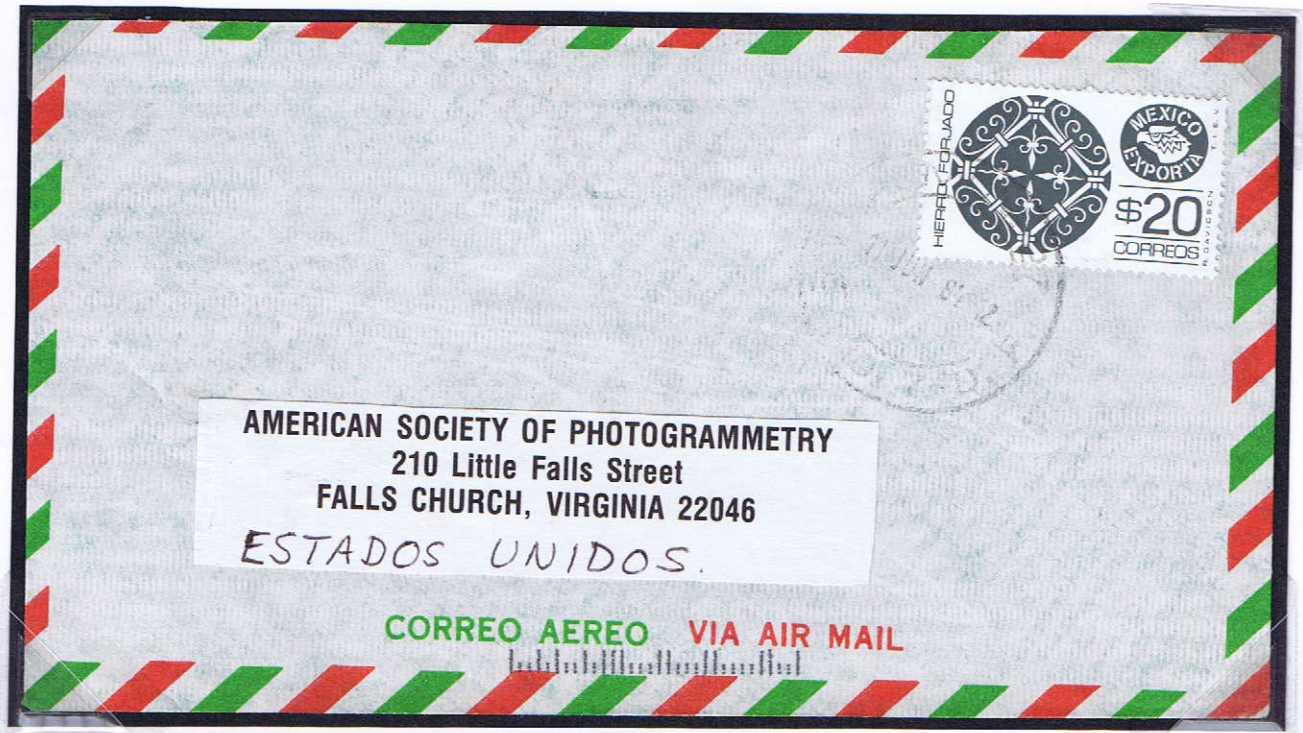
Combination of 3 x \$7 with \$5 (Perf 11.5) Rate within Mexico \$26 as posted before 31 Jan 1986 (27th) (Tariff 39).



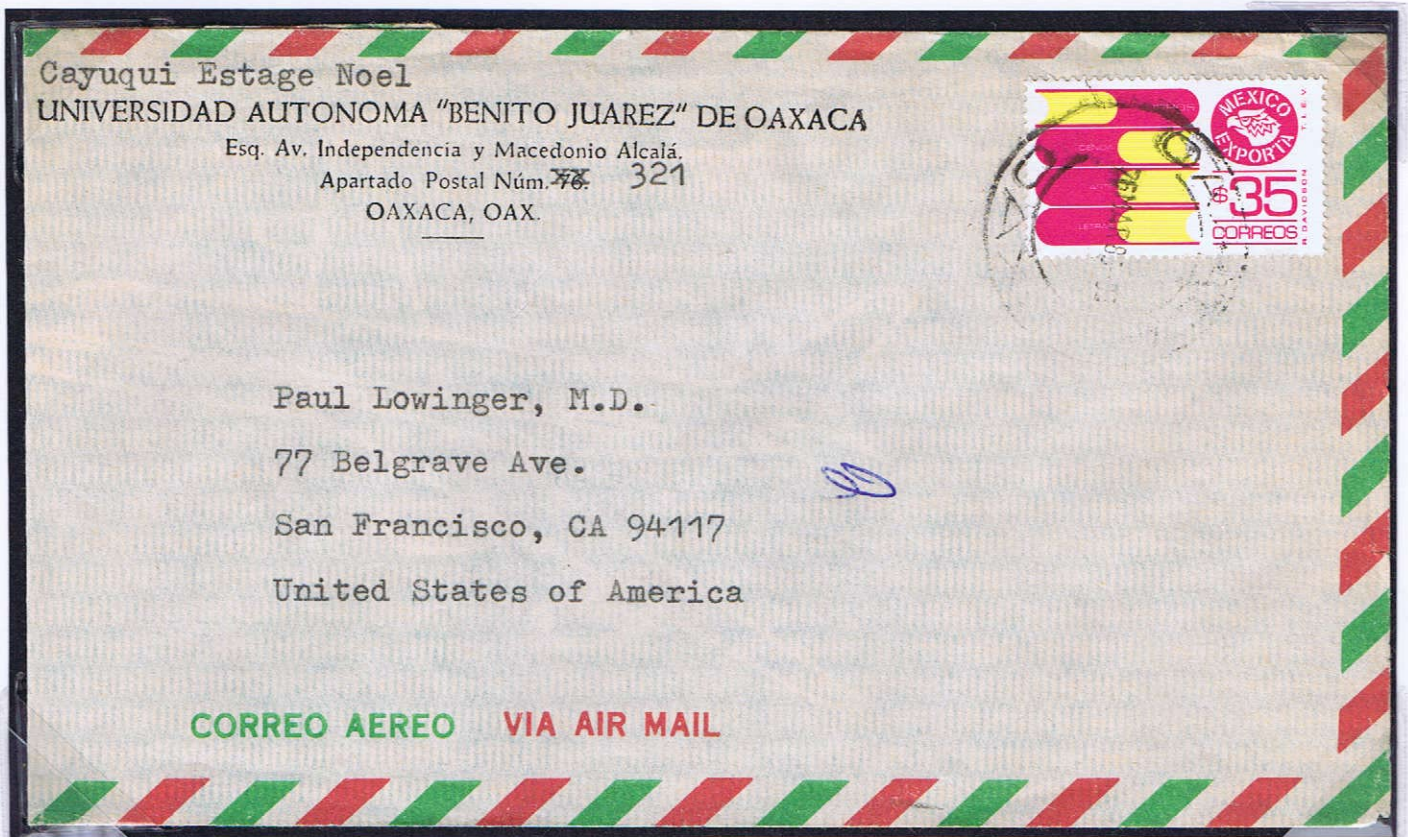
\$300 with inverted burelage plus 2 x series 5 \$15. Correct airmail rate to USA (tariff 41a) rate only in use 4 months



\$400 on registered cover to USA 1987. Probable rate supposed to be \$750 registration, \$410 postage total \$1160 (Tariff 42 in use 3 months).



\$20 letter rate to USA, 11 Jun 1984. (Tariff 35). The lowest value that could be used singly for international postage.



Usage to USA, tariff 37 of 35 Pesos effective 1 Feb 1985